



¹PRODIGY|AXIS

IMA Prodigy Axis Gen-1 USB Shoe Controller

User Guide v1.1
June 2024

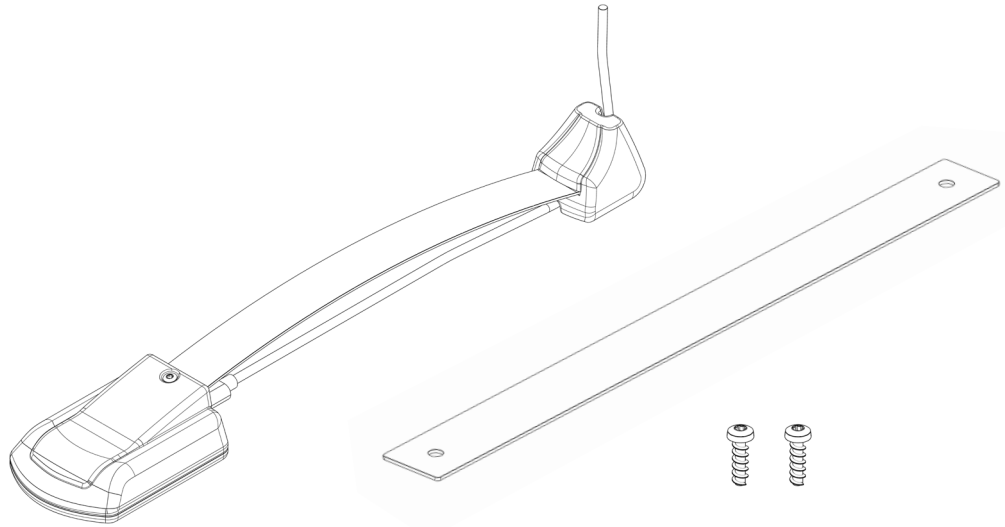
Contents

English

What's in the box	3
Specifications	3
System requirements	3
Installation quick guide	4
Installing the metal size band	4
Installing the USB cable	5
Footwear installation	6
Connecting to a device	7
Powering up Prodigy Axis	7
Troubleshooting	8
POC	8

All information within this guide is correct as of the published date.
Previous versions of this guide are available by request.

What's in the box



Toe insert with metal size band installed (UK 5.5 / UK 9)
Heel counter with attached USB cable.
Additional metal size band included (UK 9 / UK 5.5)
2 additional 3mm x 10mm T8 Torx head screws (screwdriver required)

Prodigy Axis is fully assembled and ready for immediate use.
If the unit requires assembly, please refer to the '*Installation quick guide*'

Specifications

6 Axis Accelerometer & Gyroscope
Cable: USB A to USB Micro
USB 2.0 Plug & Play with integrated power

System Requirements

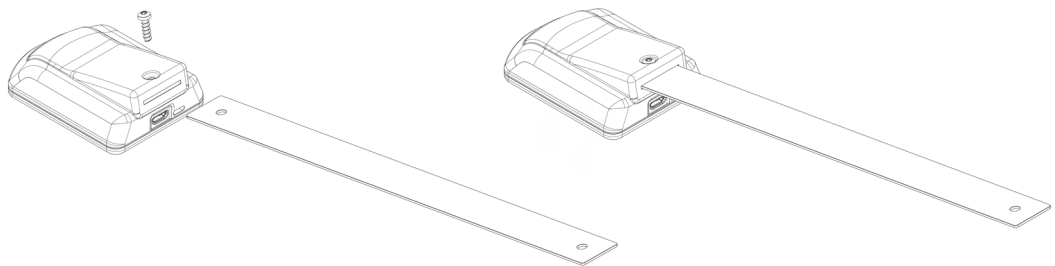
USB-A 2.0 connection
Prodigy Axis is compatible with MacOS and Windows-based PCs
Please note: Prodigy Axis will only operate with applications and experiences built for the controller.

Installation quick guide

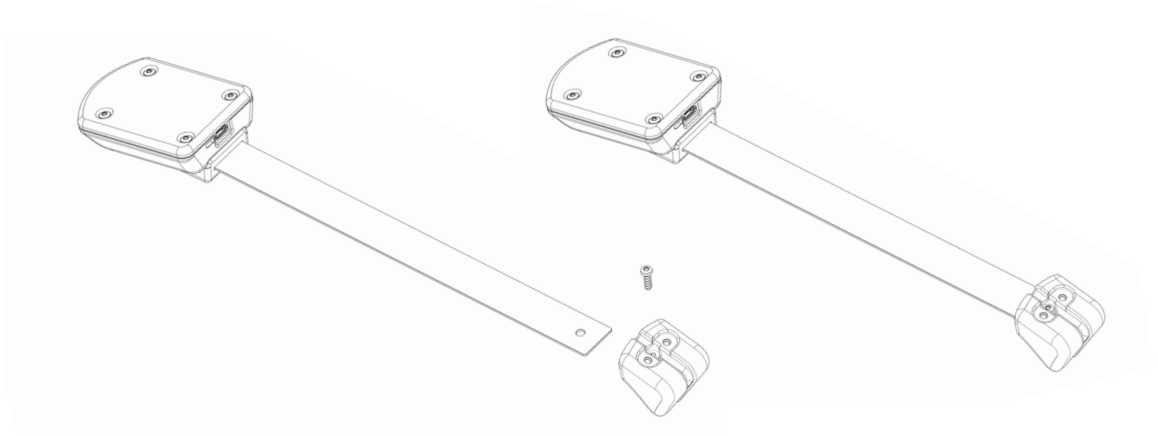
In the case where the unit is not complete, please follow these steps:

Installing the metal size band

Ensure the metal size band is secure in the toe insert, sliding it fully into the slot on the unit.



Repeat this with the other end of the metal size band, sliding this into the slot of the heel counter.



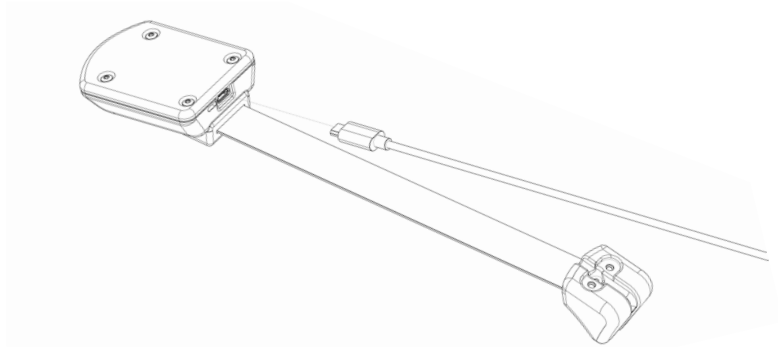
For additional security, screw the metal size band in to the place using the screws provided in the box. (Screwdriver required).

Continue the steps to check the USB cable.

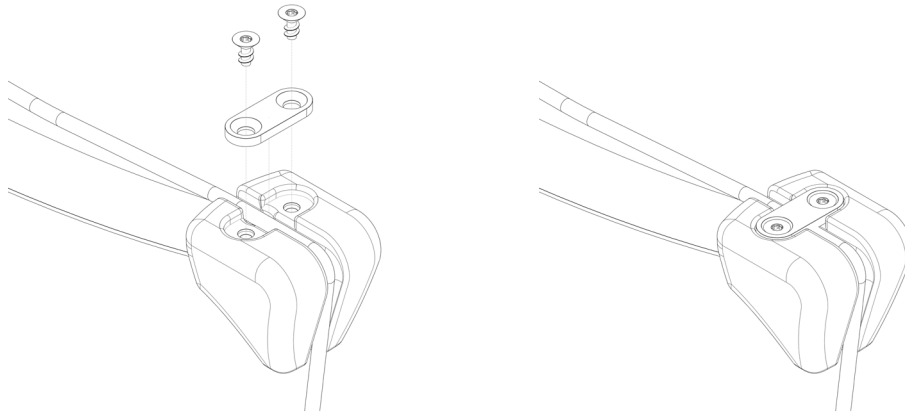
Installation quick guide

Installing the USB cable

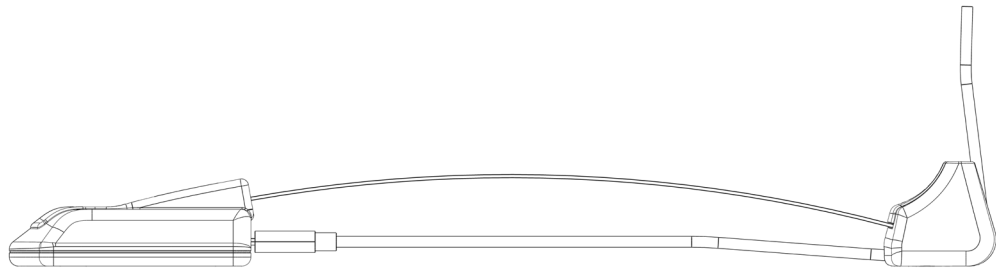
Flip the controller over and reconnect to the Micro USB port on the toe insert.



You may need to change the position and secure the USB cable in place with the bracket and countersunk screws (screwdriver required).



Ensure that the USB cable is secure, running beneath the band and under the heel counter with no tension in the cable. Prodigy Axis is then ready to be connected to a device.



Footwear installation

Prodigy Axis uses tension from the metal size band to securely fix the insert in place. Ensure you have selected the correct metal size band for your product and have installed securely before proceeding, as per '*Installation quick guide*'.

Slide the controller toe insert-first into the shoe, and to the end of the toe until resistance is felt.



Push the heel counter forward and down into the heel of the shoe. This will flex the metal size band, creating tension in the band that will fix the heel counter in place.



Ensure the USB cable is securely locked in between the guide of the heel counter and heel wall of the shoe, and not wrapped around the band.

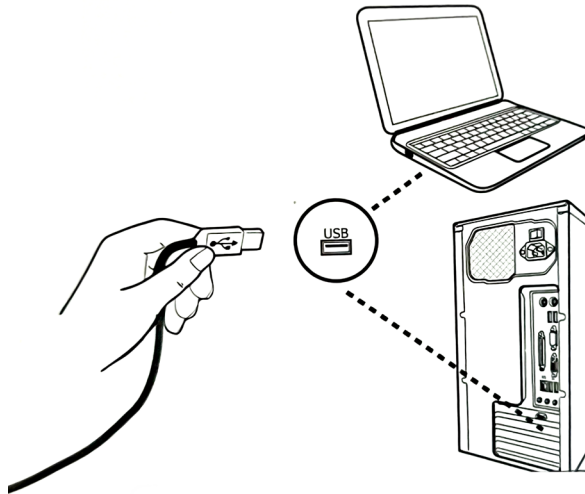


Further minor adjustments may be required to the placement of the controller within the shoe depending on type of footwear and requirements of the experience it is driving.

Connecting to a device

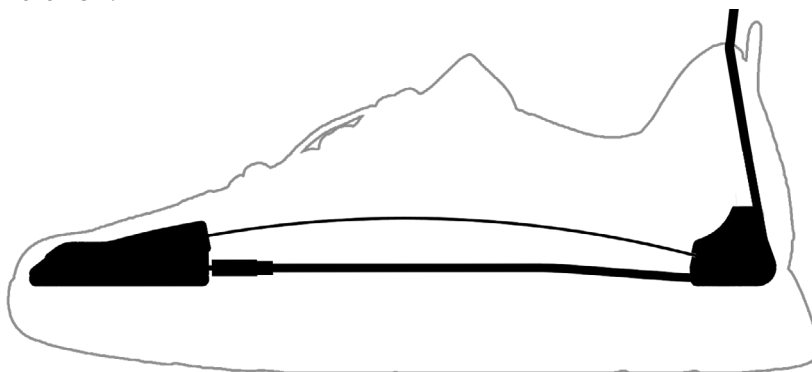
Prodigy Axis can be connected to your device, any extension cable up to 2m, or compatible USB Hub, via USB-A.

Prodigy Axis is Plug & Play, so no drivers are required, but will only operate with applications and experiences built for the controller.



Powering up Prodigy Axis

Ensure Prodigy Axis is resting on a flat surface either inside or outside of the shoe before introducing power via the USB-A cable. This will ensure accurate calibration.



Always test the controller with your application to determine full working order.

Troubleshooting

For any issues with Prodigy Axis, each unit has a unique QR code on the base. Please scan this for direct support via email, specific to your device.

POC

For any other inquiries or issues pertaining to Prodigy Axis, please direct your communication to IMA HX via email: **hx@ima.global**

Important safety information

WARNING: Failure to follow these safety instructions could result in fire, electric shock, injury, or damage to Prodigy Axis or other property. Read all the safety information below before using Prodigy Axis.

Handling Handle Prodigy Axis with care, both as a complete unit and as separate parts. Due to some production methods, when installing or exchanging the metal size band, sharp corners may be exposed.

Prodigy Axis contains sensitive electronic components and can be damaged if dropped, burned, punctured, or crushed. Don't use a damaged Prodigy Axis, such as one with a cracked case, visible liquid intrusion, or a damaged size band, as it may cause injury. Avoid heavy exposure to dust or sand.

Repairing Don't open Prodigy Axis and don't attempt to repair Prodigy Axis yourself. Disassembling Prodigy Axis may damage it, and may cause injury to you. If Prodigy Axis is damaged or malfunctions, scan the QR code on the device or email hx@ima.global

Distraction Using Prodigy Axis in some circumstances can distract from your surroundings. Always be aware and observant of yours or your users surroundings for safe Prodigy Axis operation.

Power Prodigy Axis is powered by the USB-A Cable whilst in operation. You may also connect Prodigy Axis to other third-party hubs and USB extensions, provided they carry both data and power, that are compliant with USB 2.0 or later and with applicable country regulations and international and regional safety standards.

Using damaged cables, or connecting when moisture is present, can cause fire, electric shock, injury, or damage to Prodigy Axis or other property.

Not a medical device Prodigy Axis is not a medical device and should not be used as a substitute for professional medical judgment or measurement. It is not designed or intended for use in the diagnosis of any conditions, or in the cure, mitigation, treatment, or prevention of any condition or disease. Please consult your healthcare provider prior to making any decisions related to your health.

Important handling information

Exposure to liquid Prodigy Axis is neither water resistant or waterproof, and therefore should not be exposed to any liquids.

Cleaning and care Keep Prodigy Axis clean and dry. Clean and dry Prodigy Axis, the metal size band, and any footwear it is used with after prolonged public use. Dry Prodigy Axis and the band thoroughly if they are exposed to liquids.

Clean Prodigy Axis if it comes in contact with anything that may cause stains or other damage, such as dirt or sand, makeup, ink, soap, detergent, acids or acidic foods, or comes in contact with liquids.

How to clean Prodigy Axis:

Disconnect Prodigy Axis.

Separate the Toe insert from the metal size band and heel counter.

Wipe Prodigy Axis clean with a non-abrasive, lint-free cloth. If necessary, you can also lightly dampen the cloth with fresh water.

Dry Prodigy Axis with a non-abrasive, lint-free cloth.

To help avoid damaging Prodigy Axis, observe the following:

Don't clean Prodigy Axis while it's connected to a device.

Don't dry Prodigy Axis or the metal size bands using any external heat source (for example, a hair dryer).

Don't use cleaning products, ultrasonic cleaners, or compressed air when cleaning your Prodigy Axis.

Using connectors and ports Never apply excessive pressure or force a USB connector into a port, because this may cause damage. If the connector and port don't join with reasonable ease, they probably don't match. Check for obstructions and make sure that the connector matches the port and that you have positioned the connector correctly in relation to the port.

Certain usage patterns can contribute to the fraying or breaking of cables. The cable attached, like any other metal wire or cable, is subject to becoming weak or brittle if repeatedly bent in the same spot. Aim for gentle curves instead of angles in the cable. Regularly inspect the cable and connector for any kinks, breaks, bends, or other damage. Should you find any such damage, discontinue use of the cable and contact support.

¹PRODIGY|AXIS Control is in your hands.



IMA
The Malthouse
Chadwick Street
Leeds LS10 1LJ
United Kingdom
© 2024 IMA